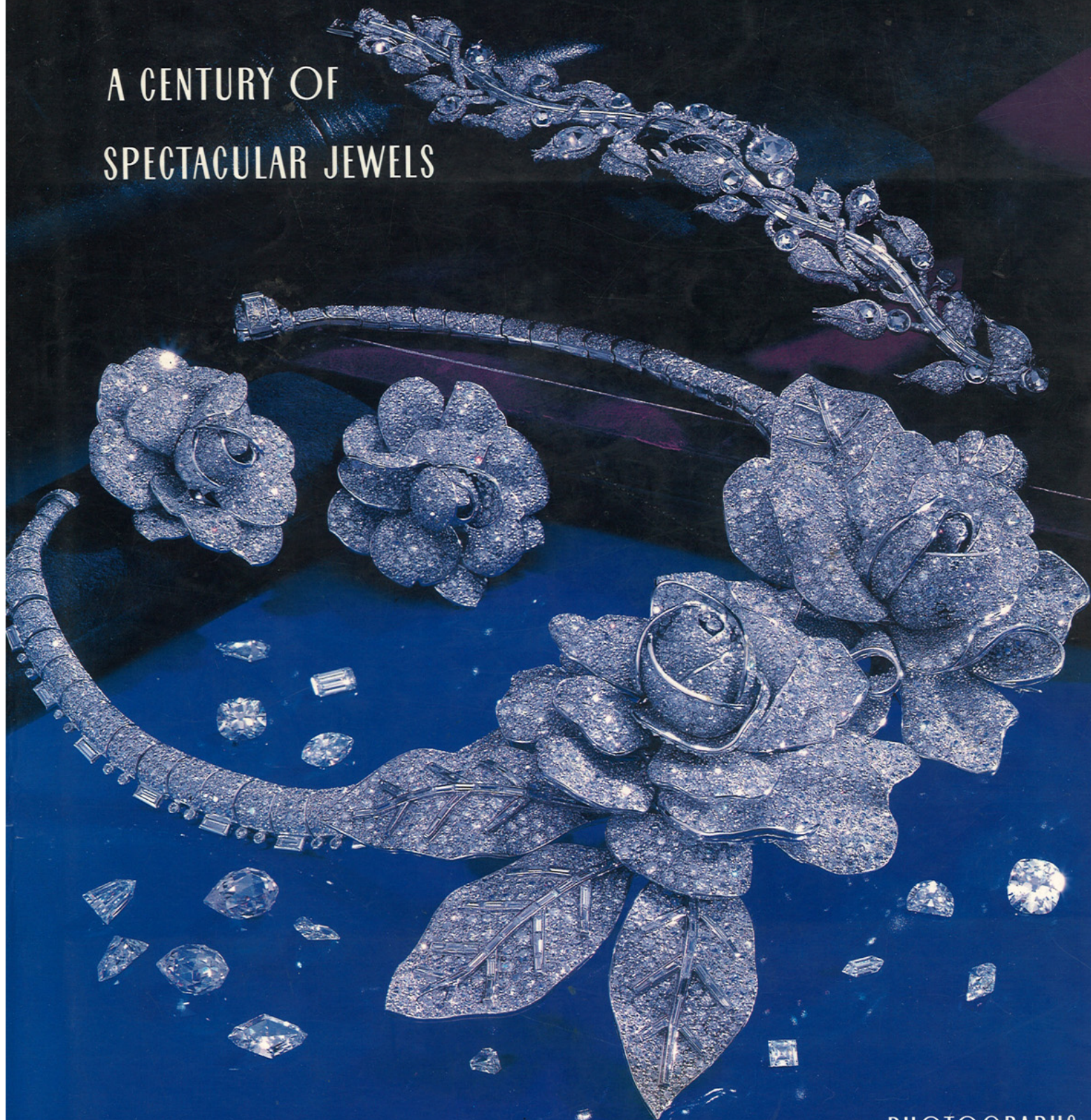


# DIAMONDS

A CENTURY OF  
SPECTACULAR JEWELS

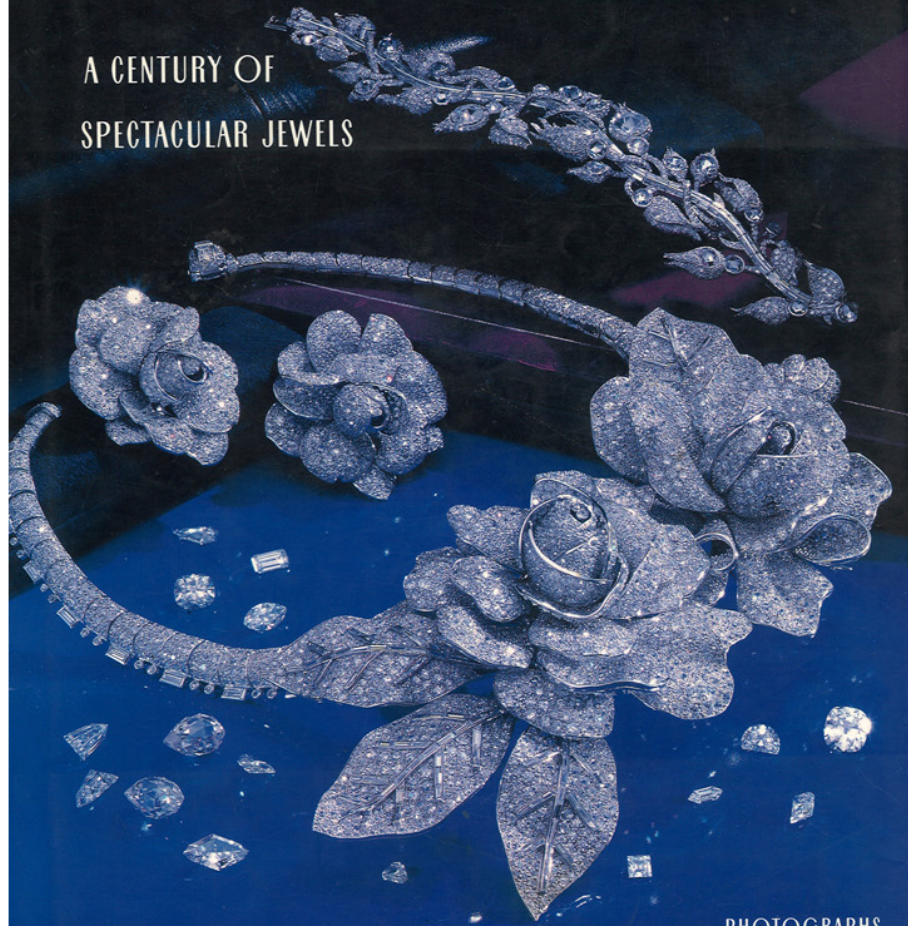


PENNY PRODDOW : MARION FASEL

PHOTOGRAPHS  
BY  
DAVID BEHL

# DIAMONDS

A CENTURY OF  
SPECTACULAR JEWELS



PENNY PRODDOW : MARION FASEL

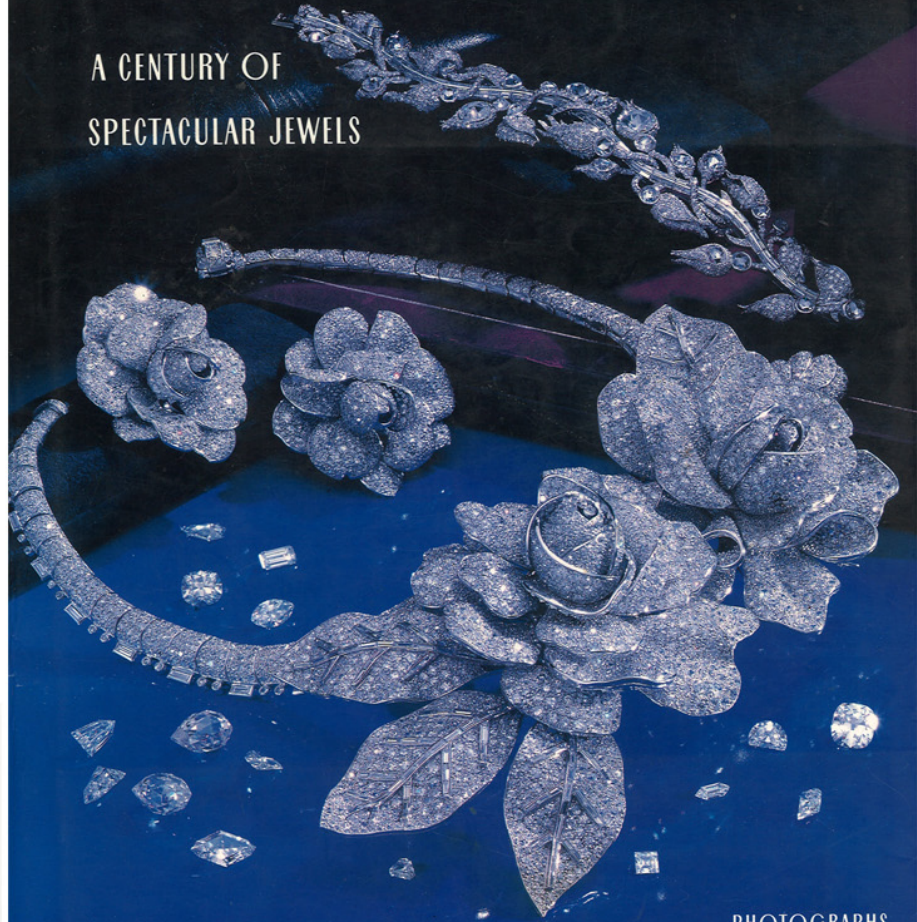
PHOTOGRAPHS  
BY  
DAVID BEHL



Long-stem pink diamond rose earrings designed by Christopher Walling and manufactured by Carvin French feature blossoms, buds, and stems of pink diamonds mounted in pink gold and leaves of olivine mounted in green gold (an alloy of gold with a varying percentage of silver, zinc, or cadmium). The pink on pink of Argyle diamonds and pink gold is a trend found in many pink diamond jewels, as the metal heightens the potency of the colored gems.

# DIAMONDS

A CENTURY OF  
SPECTACULAR JEWELS



PENNY PRODDOW : MARION FASEL

PHOTOGRAPHS  
BY  
DAVID BEHL

Two pairs of earrings from the "Logic" collection by Christopher Walling exploit the dramatic juxtaposition of pink diamonds set in pink gold against a dark substratum. The pair at the top has oxidized silver and the pair at the bottom includes ebony.

