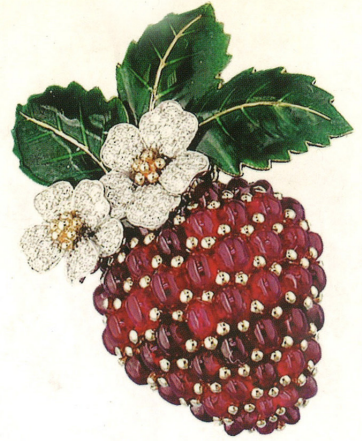


# Jeweled Garden

A COLORFUL HISTORY OF GEMS, JEWELS, AND NATURE



Suzanne Tennenbaum  
and Janet Zapata





# Jeweled Garden

A COLORFUL HISTORY OF GEMS, JEWELS, AND NATURE



Suzanne Tennenbaum  
and Janet Zapata

Right: A tulip brooch by Martin Katz of Beverly Hills is pavé-set with pink sapphires, amethysts, and diamonds, while tsavorite garnets make up the stem and leaves which are trimmed in diamonds. The flower head is interchangeable with other gem-set versions. Below: In 1992, Christopher Walling designed these tulip ear clips that convert to clip brooches. They were made by Carvin French. The flower heads are pavé-set diamonds, the stems in baguette diamonds, and the leaves in sapphires.



# Jeweled Garden

A COLORFUL HISTORY OF GEMS, JEWELS, AND NATURE



Suzanne Tennenbaum  
and Janet Zapata



Far right: Christopher Walling of New York turned to one of his favorite vacation spots, Aspen, Colorado, for the imagery for this aspen-leaf brooch from 2004. The center stone is a cushion-cut Siberian amethyst, surrounded by pink sapphires with a diamond stem.

Below:

Christopher Walling created a pair of quince blossom earrings in 1991. The flowers are set with pink diamonds, leaves with demantoid garnets and stems with diamonds.

